

AW58EMVAP AND AW584EMVSU QUICK START GUIDE



IN-DISPENSER RADIO INSTALLATION

Mounting the Device:

1. **WARNING** before proceeding power down the dispenser.
2. Attach the plastic mounting plate.
3. Attach the metal mounting bracket to the inside wall using the adhesive pad.
Clean surface before attaching.
4. Hang the radio on the tab of the wall bracket.
5. Write the dispenser number on the In-Dispenser USB Pairing Key.

Connecting the Device:

1. Connect the grounding wire to the grounding screw.
2. Connect the supplied power cable to the dispenser's power distribution board.
3. Connect network devices to the Ethernet ports.
4. Power on the Dispensers. All In-Dispenser Radios will power up with successful boot tones within 45 seconds.



WIRELESS NETWORK PAIRING

1. Power on all In-Dispenser Radios and gather all the Pairing Keys.
2. Power on the Access Point wait 45 seconds.
3. Insert the Access Points Pairing Key into the Access Point wait for affirming beeps.
4. Within 15 Seconds, insert an In-Dispenser Radio Pairing Key into the Access Point.
Then allow up to 30 seconds for affirming beeps.

Repeat steps 3-4 for each of the In-Dispenser Radio Pairing Keys.

Troubleshooting Mode:

Whenever the Access Point is silent you can insert In-Dispenser Pairing Key into the Access Point to enter Troubleshooting mode. The Access Point will chirp how many Radios are connected and the In-Dispenser Radios will chirp their signal strength.

Store the Access Point Pairing Key in a secure location.

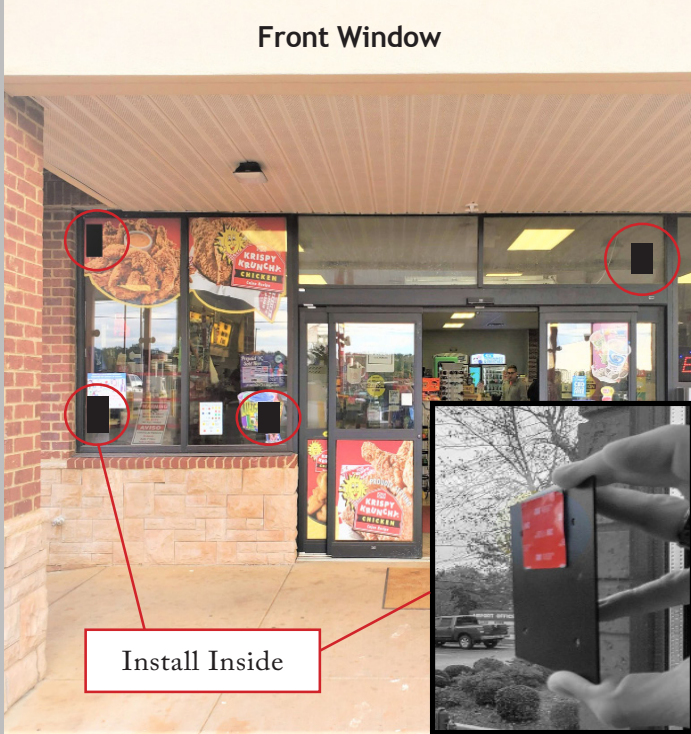


Service fee for replacement key - \$100

AW58EMVAP AND AW584EMVSU QUICK START GUIDE

IN STORE MOUNTING LOCATIONS

Front Window



Back Wall



NETWORK CONNECTION DIAGRAM

The included injector powers the Access Point via Ethernet cable.

